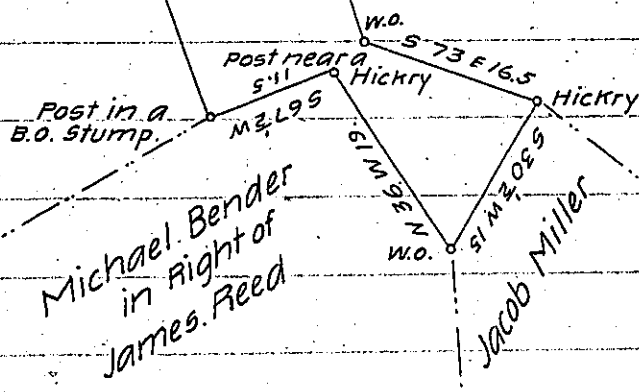


The above
 Draft Represents
 a tract of ~~land~~
 unimproved Land



situate in Martic Township Lancaster County Containing nine acres and
 eighty nine Perches and the usual allowance of six pr.ct for Roads & Sur-
 vey. In pursuance of a Warrant dated the 6th day of March A.D. 1835
 Granted to Saml. Girvin of Strasburg Township Surveyd Apl 20th 1835

for Isaac Girvin

I have Examined the above Survey, and I approve of it being accept-
 ed in the Surveyor Generals Office given under my hand this 21st
 day of April 1835. James Calwell D.S.

To Jacob Spangler Esq
 Surveyor General-Penn^a

IN TESTIMONY that the above is a copy of the original remaining on file in
 the Department of Internal Affairs of Pennsylvania, made
 conformably to an Act of Assembly approved the 16th day of
 February, 1833, I have hereunto set my Hand and caused
 the Seal of said Department to be affixed at Harrisburg,
 this sixth day of March 1905.

Loach B. Person
 Secretary of Internal Affairs.